

Admissions policy

Appletree Treatment Centre (ATC)



Approved by: Rowan Knapton (Principal)	Date: September 2020
Last reviewed: September 2020	Next review due: September 2021



Admissions policy

Appletree Treatment Centre admits children whom we feel we are able to help and meet their needs regardless of their disability, race and gender.

Admission policy for Appletree Treatment Centre

Appletree Treatment Centre is a residential primary school for pupils ages 6 – 12, offering a full range of care, education and psychological facilities for children with social, emotional, Mental Health needs and associated learning difficulties.

Admission Profile

Children admitted to Appletree Treatment Centre will have a range of difficulties which have caused a breakdown in educational setting and/or social work establishments.

These difficulties will include:-

- Experiences of Physical, Emotional, Sexual abuse.
- Specific Learning Difficulties
- Some level of organic dysfunction
- Mental health needs
- Asperger's or high functioning Autistic Spectrum Disorder.

Appletree Treatment Centre attempts to take a longer perspective by not offering placements (and thus inviting further experiences of rejection), to children who are/have:-

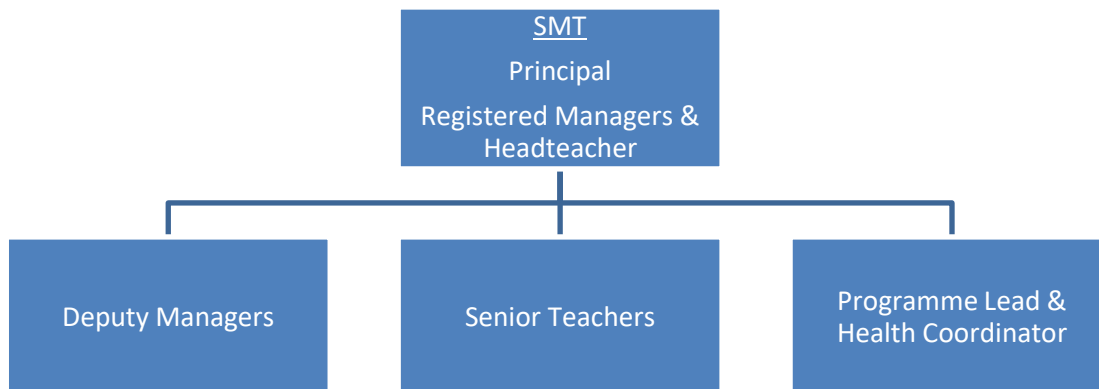
- Severe disorders on the range of Autistic Spectrum Disorder
- Psychotic Impairment
- Serious conduct disorder

Admission Process

It is the responsibility of the Senior Management Team to select individual placements and to ensure that the Committee agrees the process of selection and transition.



Members of the Committee



In order to minimise the chance of further instability for the child, Appletree Treatment Centre endeavors to select by agreement with placing agencies, only those children whom we feel can be successful in our environment (see ATC missions and aims and objectives for more information).

We require full educational, social work and health reports prior to considering a child. These referral papers are circulated to senior members of staff who try to ensure that they have the maximum up to date information available.

The Principal, Registered Manager and Headteacher will also speak with the professionals who have most recently worked with the child. They will then discuss the child and make an assessment as to whether we are able to offer a place.

This assessment will include an impact assessment of the child's admission on other children currently living at Appletree Treatment Centre.

Appletree Treatment Centre can on occasion be directed to admit children.

Appletree Treatment Centre also offers the child, family and placing authorities the chance to make an appraisal of the facilities at ATC over any length of time they wish, so that admission to Appletree Treatment Centre is a joint decision engaged in by all the relevant parties.

Once children are admitted to Appletree Treatment Centre, it is the responsibility of staff at ATC to be flexible in relation to meeting their individual needs. This will include supporting them through disclosure of abuse, finding an identity, relinquishing self-destructive habits and coping with events within their family.



An Individual Programme, incorporating an Education and Care Plan is devised for every child following an initial three-month assessment period. This Individual Programme is reviewed bi-annually. Everyone involved with the child's care and education is invited to each review.

Appletree Treatment Centre remains in close contact with referring authorities and once agreement to admit has been reached it is only under extreme and exceptional circumstances that Appletree Treatment Centre will ask them to find alternative provision for the child. It is the flexibility and commitment that Appletree Treatment Centre provides, which allows us to maintain and support children through difficult periods.

Aims and Objectives

The broad aim of the school is to redirect the child onto pathways of normal development so that they can experience success and return to and be accepted by their schools, homes and communities. Our objectives for achieving this are: -

- To teach the skills necessary to adapt to the world in which we live.
- To operate an education programme based on appropriately modified National Curriculum, which will;
 1. Help the pupils to overcome difficulties and make up deficiencies
 2. Give opportunities to develop potential and learn new skills
 3. Meet statutory educational requirements and achieve more normal developmental milestones
 4. Help the development of appropriate learning patterns.
 5. Provide a broad, inspirational education experience.
- To teach them to care for themselves and others.
- To develop self-control and self-respect.
- To learn to make appropriate choices based on an understanding of the consequences.

Emergency Admissions Procedure

Appletree Treatment Centre does not provide for emergency admissions.